

NEWS AND VIEWS 2010
VOLUME 16 ISSUE OCTOBER/NOVEMBER

FROM
THE
BOSS



"I'm having way too much fun enjoying a real and extended holiday with my wife, so I have left this issue's From the Boss comment to be written by Jodie, our sometime I.T. person and erstwhile Jafa (now proud rural Southlander)..."

I've been working in the office quite a bit with the Boss away (mostly 'cause I get to sit in his chair, work in his office and feel important) and it has allowed me to get a much more in-depth feel for the place than I have had from my previous flying visits.

I've been updating computer systems, showing admin staff how to better use our Intranet system, and trying to ensure that SDE has a strong online presence as we move toward 2011. This has meant that things have been changing - some a little and some a lot.

Continuity and consistency are important parts of life at SDE, as they ensure that our workers are productive and comfortable - no matter what disability they may have. Our admin staff do their best to ensure other staff feel that way.

As an organisation, the recent changes in our community - elections, GST increases, diverse and extreme weather conditions (I got sunburned yesterday!) - have all contributed to the stresses and changes the admin staff have been under - and I have been adding to that mix. There is always the chance that they will get annoyed with me - mostly because I'm adding to their workload in the short-term, while creating and embedding systems to reduce that workload in the future - but they really haven't.

The admin staff at SDE are a wonderful, friendly bunch, and I am very pleased to have this opportunity to give them this 'bouquet'. They have seen the vision beyond the chaos, and continue to move forward with enthusiasm and dedication. On any given day, I might interrupt them four or five times each, and they are always pleasant and receptive to me. I want to thank them for this, as I know how distracting it is when work is interrupted that way.

The support that SDE has within the Southland community is testament to the hard work and adaptability of their staff. The Boss (who is the vanguard), is well supported in his endeavours by a great group of people.

I am confident he will come back refreshed in mind, body and spirit, and will find his team ready to take on the next challenge.

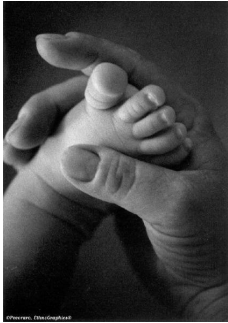
Jodie

**Dear Boss,
Congratulations from
your SDE family**

For your QSM



Congratulations!



To Jeren, Jackie and big sister Evie on the safe arrival of Samantha Peta Maria Van de Schoor. Weighing a healthy 9lb 8oz.

INTERNATIONAL WINNING PHOTO



Bob Kemp

Photo by Shelley Clark

This photo of Bob Kemp earned SdE 3rd place in the 2010 WORKABILITY INTERNATIONAL PHOTO COMPETITION

Thank you's

Kay May and Sally would like to thank Ian Thompson for covering their cars over the winter months. It has been very much appreciated!

I would like to thank Dale Batchelor for all her time and personal assistance to Employment Connections Clients.

Dale owns Jeans and Tops and has not long shifted her business into the old Farry's building on Dee Street, Dale assists our clients for training on all aspects of Retail, and the Client that is there at the moment has excelled both in the work place and her personal development.

It is important we acknowledge people in our Community like Dale as her help and commitment is voluntary and it is wonderful to see Business's in Invercargill supporting our service.

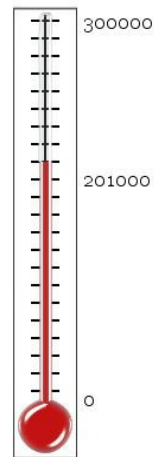
As Dale supports us it would be nice to return the favour , if you are in town pop in and have a look at Dales great range of clothing.

May Fraser - Employment Connections

BUILDING PROJECT



A huge thank you to those who have made donations and pledges to our new building fund so far.



Pledges and Donation List

DONATIONS:

Lyndsay McDonald

Life Quotes

There are only two ways to live your life.

One is as though nothing is a miracle.

The other is as though everything is a miracle

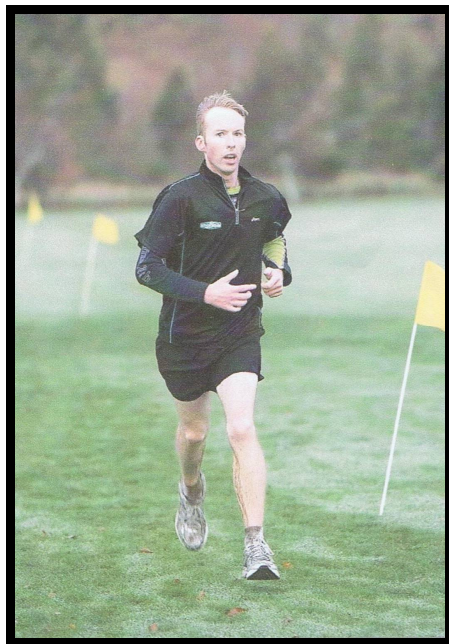
Recycling Rambles:

We are a busy lot at SDE Recycling. Our chomping machines and nimble-fingered workers are dismantling, crushing and packing all the product we have. We've got bale wrap, ice-cream containers, polystyrene, old computers and power boxes coming out our ears - and we want more! Don't forget that we also accept polystyrene, and that bale wrap needs to be in fadges or fertilizer bags (we can't process the netting though, so please don't bring that to us). Businesses can have all their excess products recycled - give us a call on 214-5111

Alan McDowell over at E-Waste is doing a great job on the old power meter boxes that we are receiving as people's meters are replaced. Given the estimate is for some 20 to 30 thousand houses, he is going to need a bit of overtime to get through it all!

Dominic Crowe from Business Collections has been selected to represent NZ in power lifting at the Special Olympics in Athens next year. Woo Hoo!

As we head into summer, we are loving the brighter days and warmer weather. Come on down and see us - and bring your recyclables!



Michael Casey Cashes in.

Michael Casey Won the senior section in his local Harrier Club competition.

Michael received a voucher from Allan White Sport.

- Events and Holidays
Coming up**
- Labour Day 25th Oct**
 - Tenpin bowling Challenge
Dunedin 29th-31st Oct**
 - SdE Christmas Function
22nd Dec**
 - Christmas Day 25th Dec**
 - Boxing Day 26th Dec**

Happy Birthday



OCTOBER

- Donna (2nd)
- Gerald (4th)
- Allan T (14th)
- Murray (27th)
- Shevaun (31st)

NOVEMBER

- Vicki (3rd)
- Alalister (4th)
- Debra (5th)
- Brett (21st)
- Mary (25th)
- Andrew (29th)

Disco



The next and final for the year Disco will be on 3rd December. *(This date is different to one on your calendars)*

LOUD SHIRT DAY

On The 19th of September the girls in the EC room and Angela cooked up some burger for lunch to raised funds for loud shirt day. We raised \$121.00 dollars for the day.

This money went to:



JUSTIN AND MIRIAMA

"Thrifty" KINDLING WOOD



10 kg \$10.30

5kg \$7.20

Kindling Chips
\$6.70

Delivery Charges
\$11.00 (within city
Limits)

SdE Christmas Function



The Christmas function will be held on the 22nd of December, so pencil it into your dairies booked in to the hairdressers and start looking for that new outfit.

Further details will be given at a later date.



THE
COMMUNITY TRUST
OF SOUTHLAND
Making a difference